

Marusugi's
EAGLE Roof Tiles

Clay Flat Roof Tile

Eagle Lock

Protecting your house from earthquakes, rain and wind.

Available for lower pitched roofs

Feature
1

Disaster-Resistance

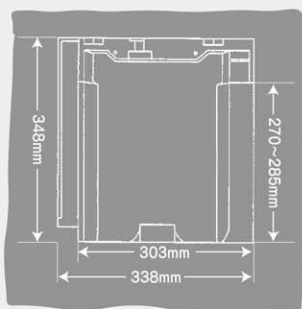
Now They Are
More Disaster-Resistant.

"Lock Arms" do not get rusty or bend, and they work well: the tiles and the Lock Arms (headlocks) of the lower tiles lock to make the roof more durable. The withdrawal strength of the fastened nails affects Lock Arms, making the tiles disaster-resistant.

Technical Data

Eagle Lock

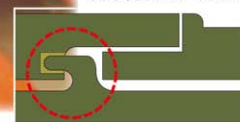
Length	348mm
Width	338mm
Exposed Length	280mm (270~285mm)
Exposed Width	303mm
Weight	3.5kg/piece (41.3kg/m ²)
Pieces Per Pallet	360 pieces
Pieces Per 1m ²	12pieces
Minimum Roof Pitch	3/10



Note 1: The pitch of battens is shorter by 2mm-3mm than the exposed length of the tiles.



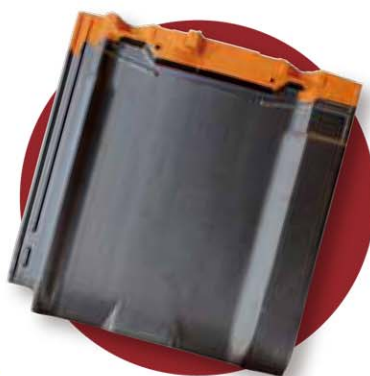
Sectional Drawing



Water Resistance

Feature
2

We have obtained a patent for our effective water proofing provisions. The water-channels on the sides and the lower parts of the tiles prevent leaks.



Feature
3

Easy Installation

With 15mm of space for adjusting the exposed length of the tiles, it's easier for you to install the tiles. Plus, you do not have to use extra nails and clips for installation.

Reflecting more than 50% of infrared ray from sunlight to prevent heat.



See the list of the colors on the back side for HeatProof Colors.

Heatproof
Colors

* The colors of the tiles might be slightly different from the actual products.



Straight Black

Eagle Lock Colors



Silver Black



Straight Black



Matte Brown



Silver Black



Subaru



Rusty Green



★ Clear Mat

★ is heat-proof color

■ Roof Pitch

Roof Pitch	3.0/10	3.5/10	4.0/10	4.5/10	5.0/10	5.5/10	6.0/10
Length between ridge and eave	4m	6m	8m	10m	12m	15m	17m

■ Manufacturer and Distributor

■ Distribution Agent

MARUSUGI MARUSUGI CO., LTD.



4-2-30, Ronchi-cho, Takahama City, Aichi 444-1312 JAPAN

E-mail address: kanri@marusugi.co.jp

Website: <http://www.marusugi.co.jp/en/index.html>